





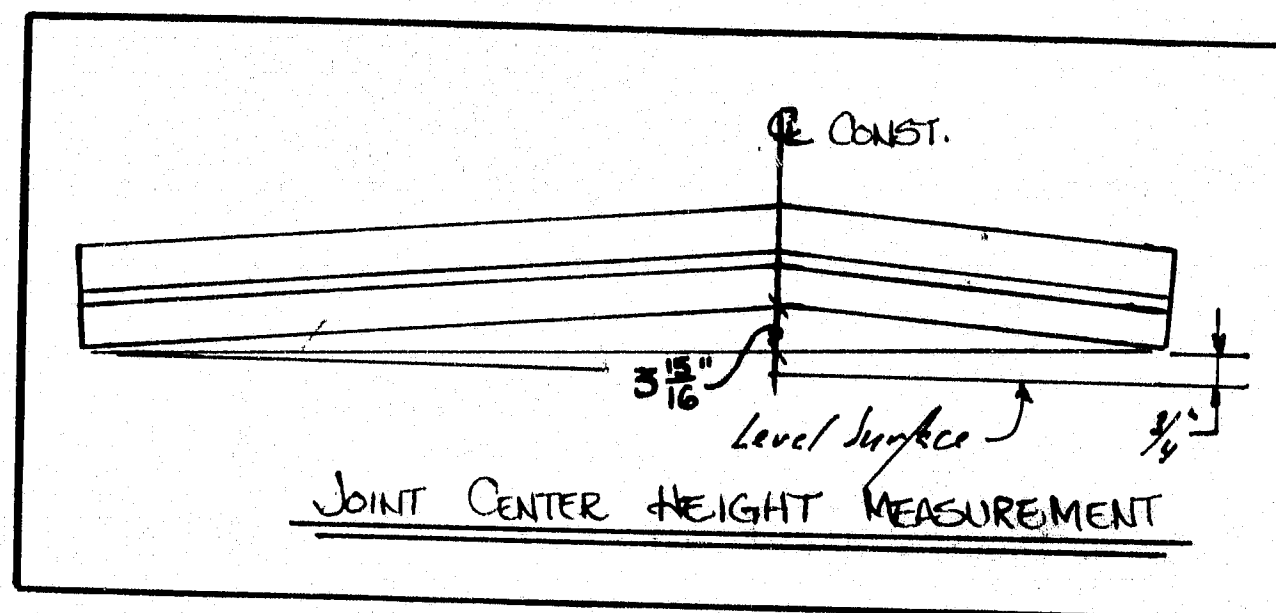


See sheet 6485-4a for Bill of Materials

#3

NOTE:

1. Omit any anchors interfering with an adjustment device. Anchors to be 1'-0" O.C.
2. Retention bars to be 1'-3" O.C. staggered, except where shown.
3. Seal to be installed in the field.



\*NOTE:

G.C. TO CUT IN FIELD PER G.C.'S REQUEST.

OFFICE COPY  
RECEIVED MAR 23 1990  
CHECKED  
REVIEWED

REVISION: 03-21-90

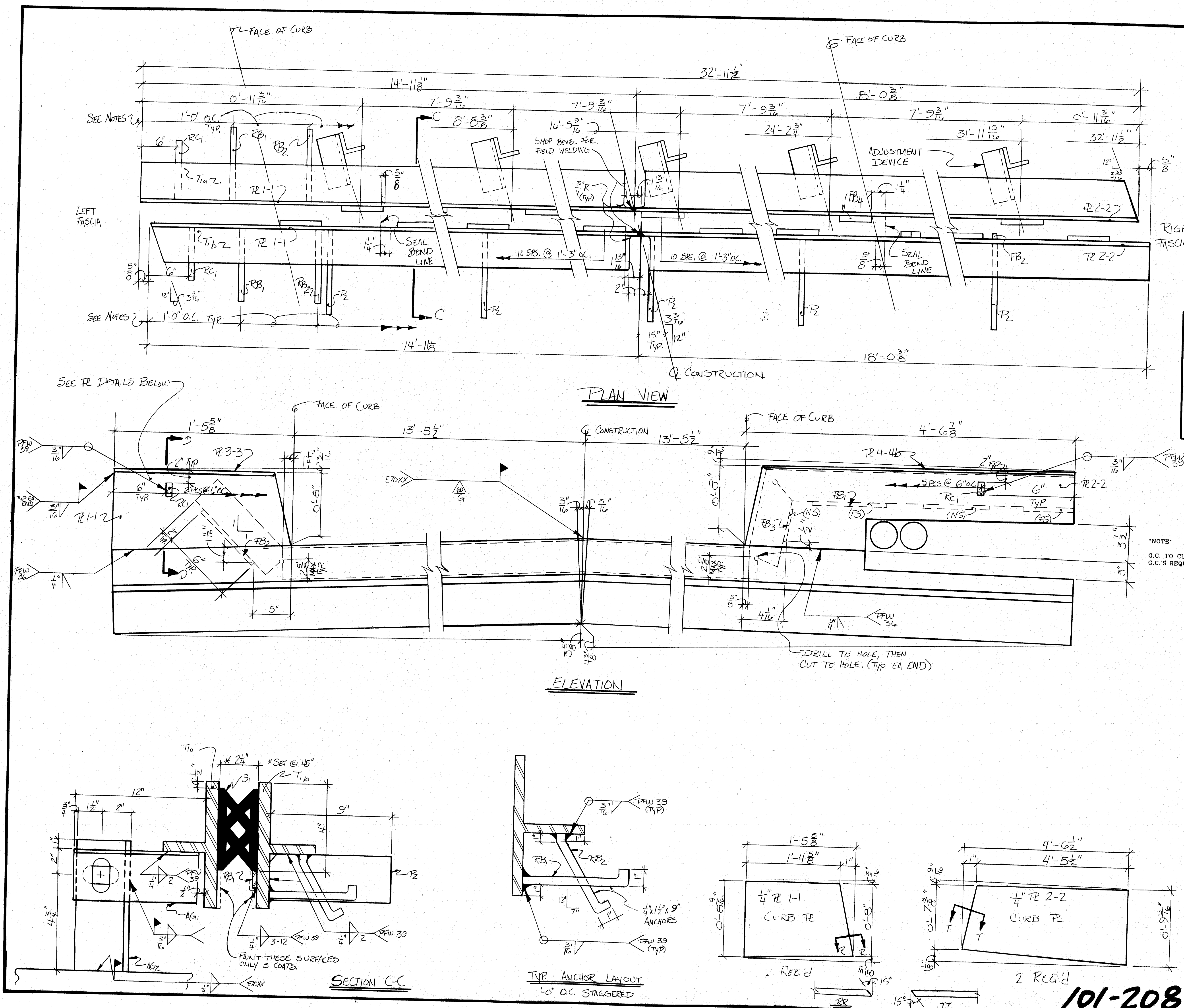
STAMP:

STATE OF MAINE  
DEPARTMENT OF TRANSPORTATION  
APR 1 1990  
Approved as noted  
K. Jacobs  
VILLING ENGR.

MATERIAL: A36 UNLESS OTHERWISE NOTED.  
BOLT MAT'L: A325 TYPE 3 UNLESS OTHERWISE NOTED.  
WELDING: TO MEET AWS D1.1-B0 UNLESS OTHERWISE NOTED.  
HOLES: 15/16" UNLESS OTHERWISE NOTED.  
PAINT: WHERE SHOWN  
TYPE OF PAINT: BASIC LEAD SILICO CHROMATE (ORANGE)  
CLEANING: SAND BLAST AFTER FABRIC. X  
SSPC SP-6 BEFORE FABRIC.

LUNT RD. OVER I-295  
FALMOUTH, ME CUMBERLAND COUNTY  
G.M. CROLEY PFW, INC. 02-16-90  
NOT TO SCALE PECKS FAB WELDING CLK BY F. OLSBY  
COMPRESSION SEAL ABUT #1  
M-0732(2) FALMOUTH 6485-3

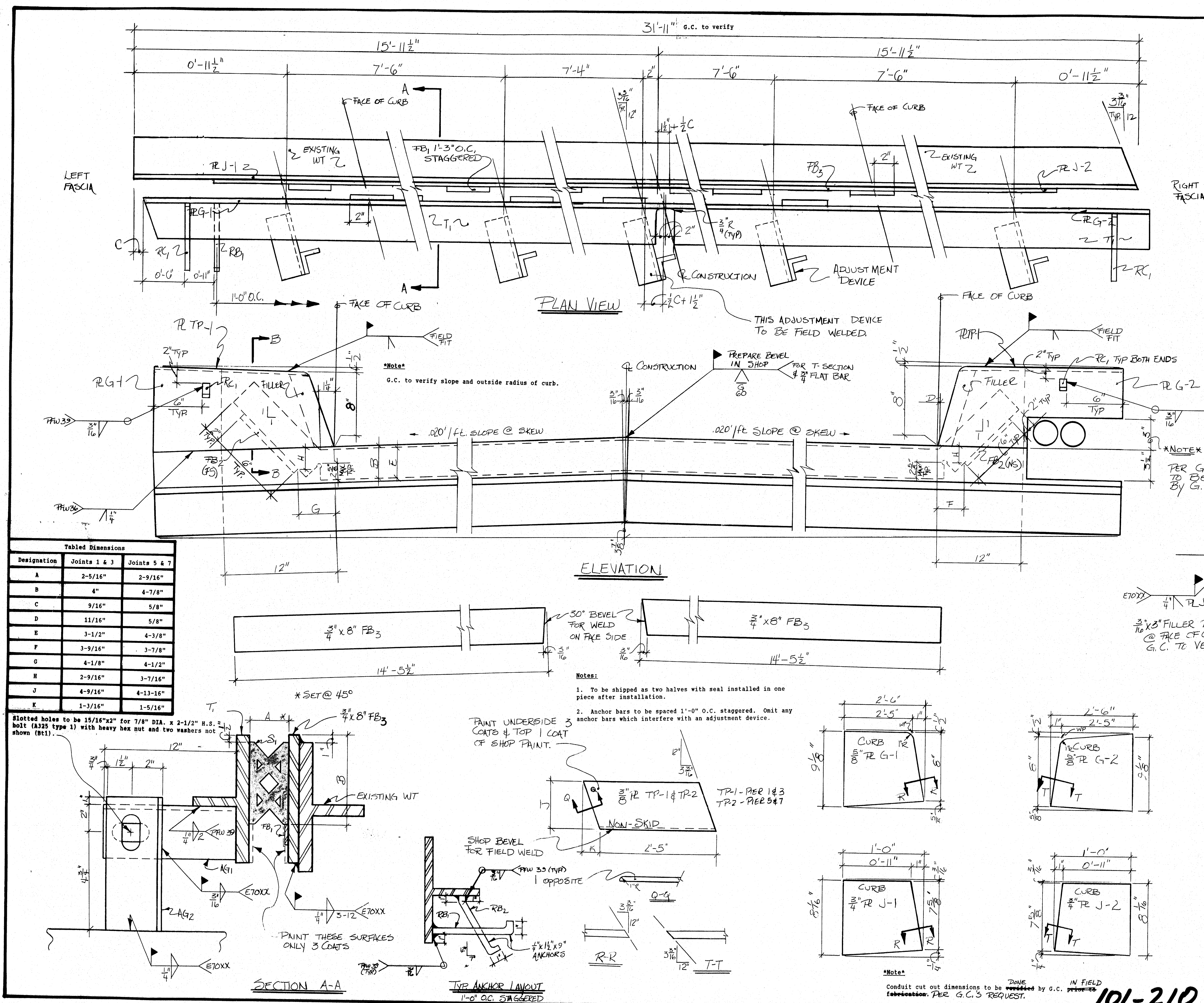
101-208











**STAMP:**

STATE OF MAINE  
DEPARTMENT OF TRANSPORTATION  
Approved: \_\_\_\_\_  
Returned for Corrections: \_\_\_\_\_  
MAR - 1 1990  
Approved as noted: \_\_\_\_\_  
Rejected: \_\_\_\_\_  
K. Jacobs  
WELDING ENGR.

MATERIAL: A36, UNLESS OTHERWISE NOTED.  
BOLT MAT'L: A325 Type 1, UNLESS OTHERWISE NOTED.  
WELDING: TO MEET AWS D1.1-80  
HOLES: 5/8", UNLESS OTHERWISE NOTED.  
PAINT: WHERE SHOWN  
TYPE OF PAINT: BASIC LEAD SILICO CHROMATE (ORANGE)  
CLEANING: SANDBLAST BEFORE FABRIC, AFTER FABRIC, BEFORE FABRIC.

TITTLE BRIDGE OVER I-95  
CUMBERLAND, ME / CUMBERLAND COUNTY

G.M. CROPLEY, PEW, INC. 01-23-90  
NOT TO SCALE PECK'S FAB. & WELDING CHK BY: F. CISEN

EXPANSION JOINTS PIER 1, #3, #5 & #7  
1R-95-4(58) 6485-5

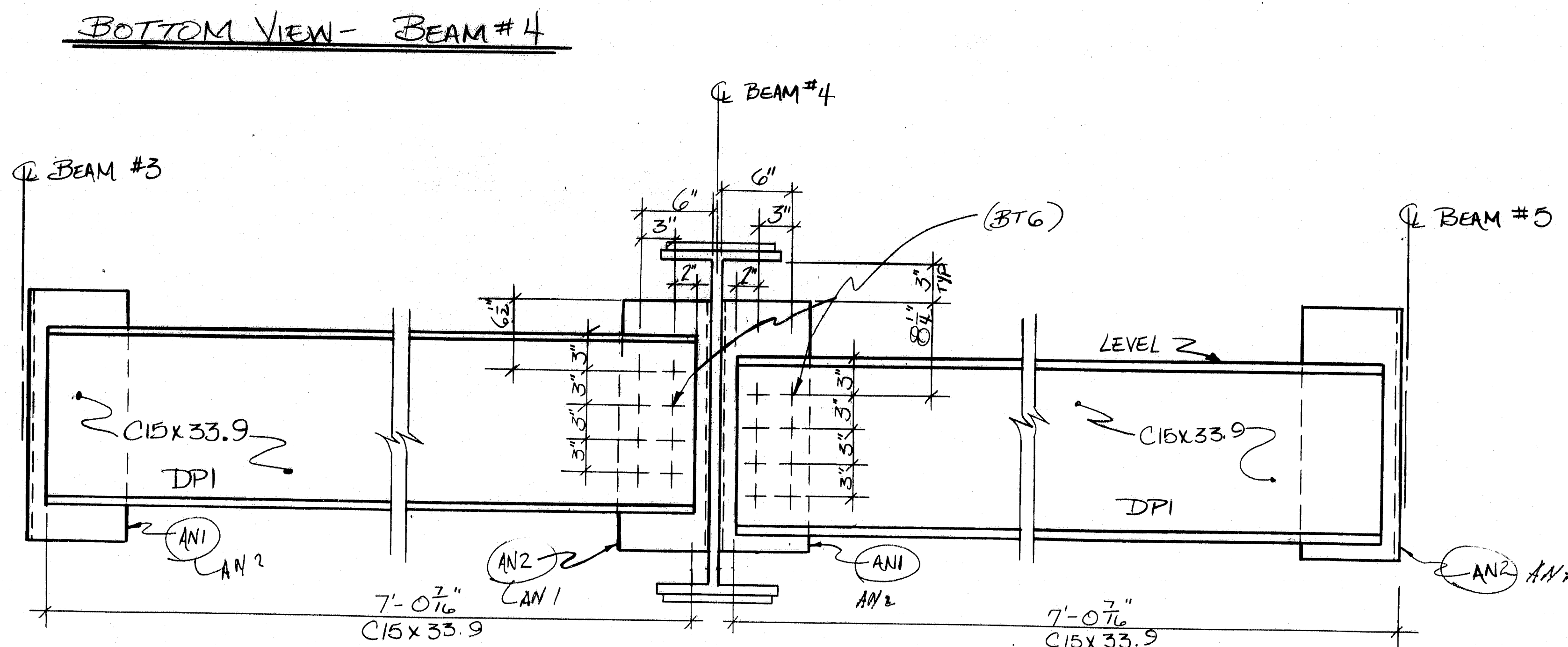
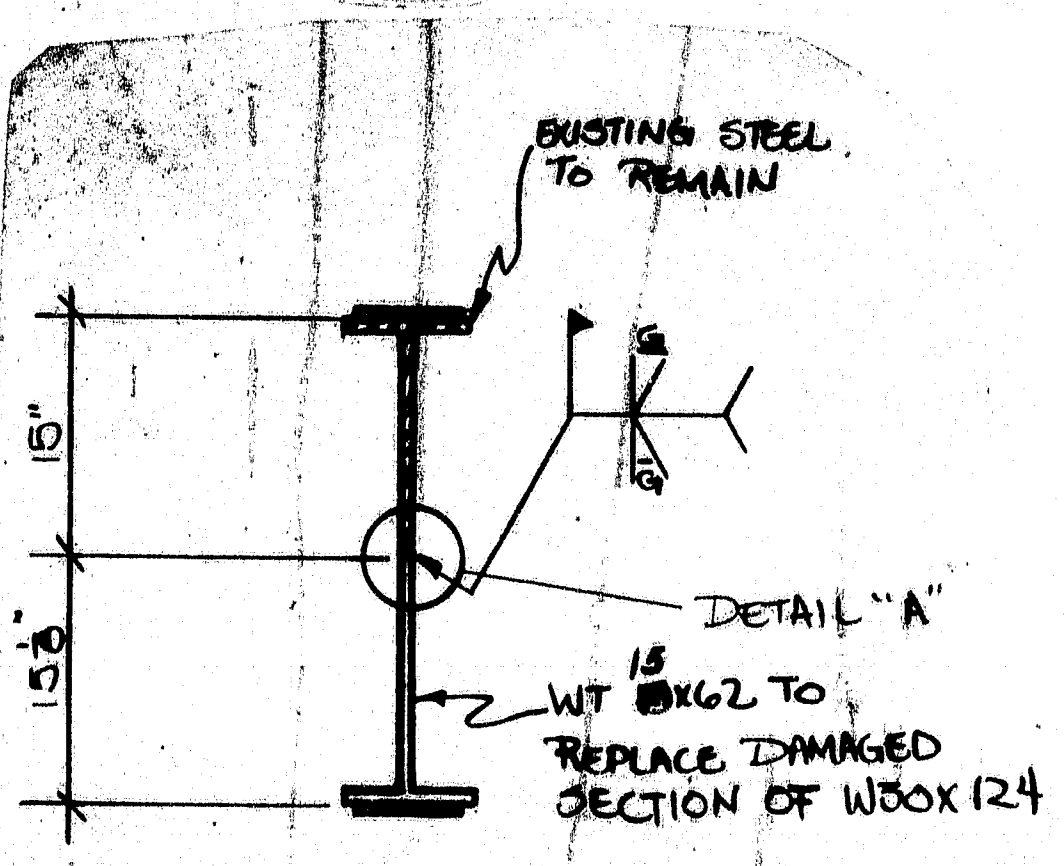
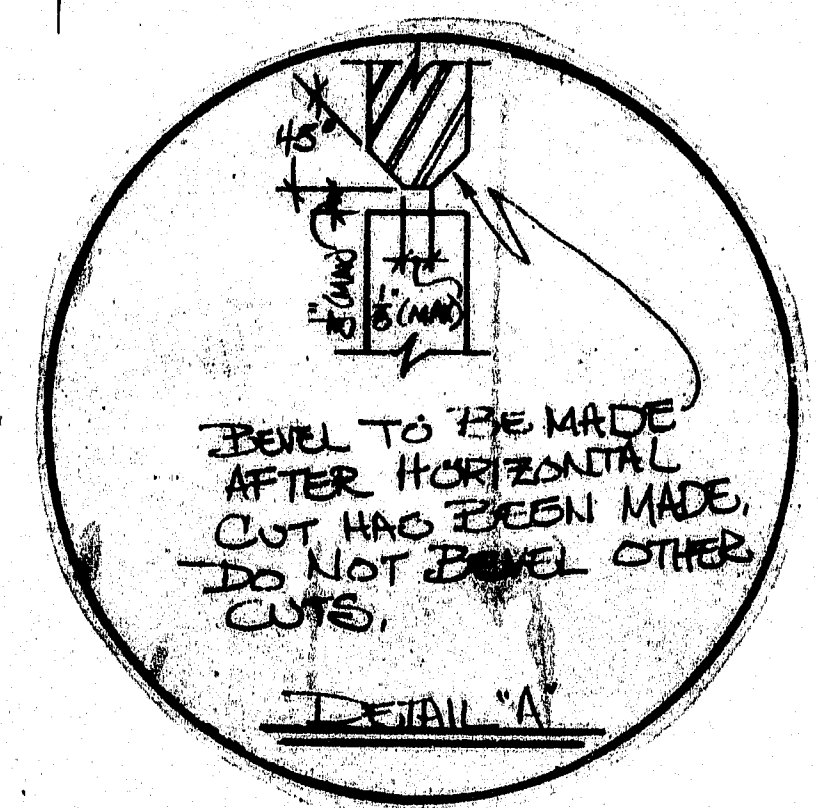
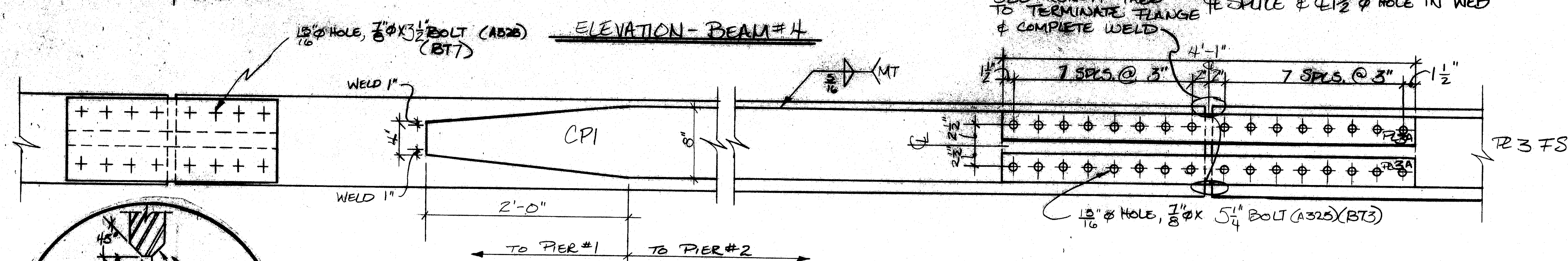
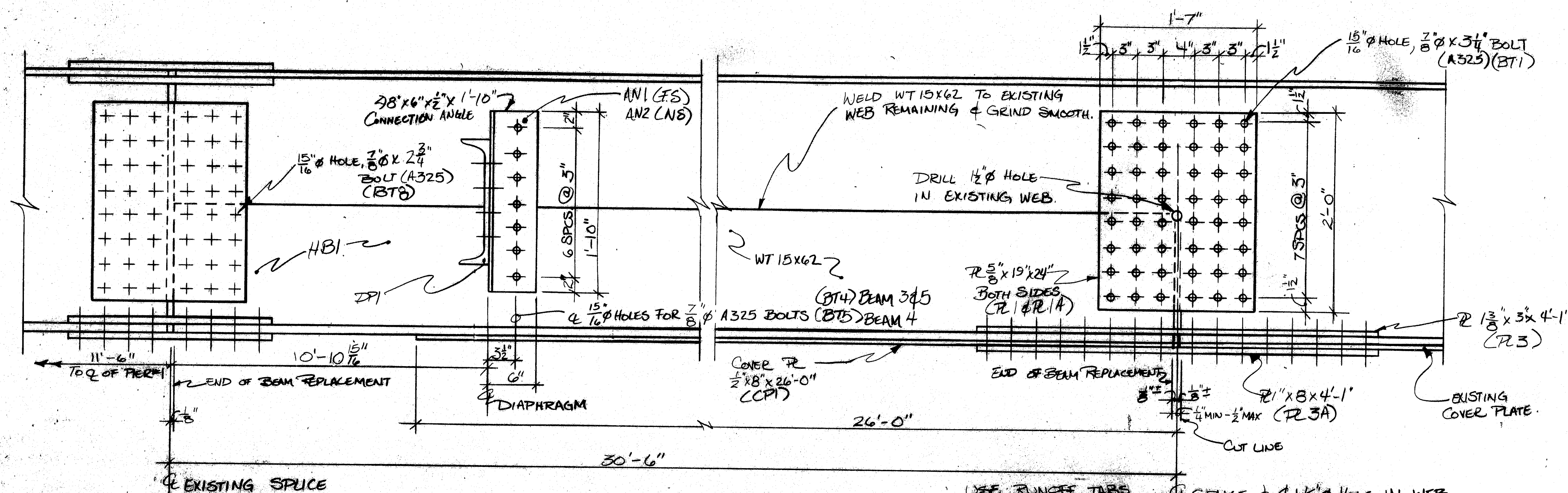
101-210



MATERIAL:	A36		UNLESS OTHERWISE NOTED
WELDING:	TO MEET AWS D1.1		50
HOLES:	1/2" Ø		UNLESS OTHERWISE NOTED
PAINT:	NONE		
TYPE OF PAINT:	NM		
CLEANING:	SANDBLAST SEPC: SP-C		AFTER FABRIC BEFORE FABRIC

BUCKNAM RD. OVER I-295			
FALMOUTH, ME / CUMBERLAND COUNTY			
G.M. COOLPEY	FFW, INC.	09-08-09	09-08-09
NOT TO SCALE	PECK'S FAB & WELDING	ON BY C. COOLPEY	
504.7 BEAM #1 DETAILS			
M-0736 (2)		A8099-1	





DIAPHRAGM CONNECTION DETAIL

BILL OF MATERIALS				
MARK	QTY.	DESC.	LENGTH	REMARKS
PL1	2	5/8"x1'-7"	2'-0"	CVN
PL1A	2	"	"	"
PL2	2	3/4"x4"	2'-7"	"
PL2A	1	5/8"x10"	"	"
PL3	2	1 3/8"x3"	4'-1"	"
PL3A	1	1"x8"	"	"
AN1	4	1/2"x8"x8"	1'-10"	"
AN2	4	1/2"x8"x8"	1'-10"	"
BT1	96	7/8" DIA.	3 3/4"	A325 TYPE 1
BT2	20	"	3 3/4"	"
BT3	32	"	5 1/4"	"
BT4	20	"	2 1/2"	"
BT5	7	"	3"	"
BT6	64	"	2 1/4"	"
BT7	32	"	3 1/2"	"
BT8	96	"	2 3/4"	"
CP1	1	1/2"x8"	28'-1"	CVN
DP1	4	C15x33.9	7'-0 7/16"	"
WT	2	WT15x62	30'-6 3/4"	CVN

- NOTES
- AT AN1, SHOP DRILL DIAPHRAGM AND BOTH LEGS OF THE 1/2" x 8" x 8" ANGLE. AT AN2, SHOP DRILL DIAPHRAGM AND 6" LEG OF THE 1/2" x 8" x 8" ANGLE ONLY. FIELD DRILL THE 6" LEG OF THE 1/2" x 8" x 8" ANGLE.
  - WHEN REASSEMBLING SPLICES USING EXISTING PLATES, USE NEW U.S. BOLTS A325. (SUPPLIED BY METALS SUBCONTRACTOR)
  - PLATE BOLTS TO BE INSTALLED WITH HEAD DOWN.
  - MATCH DRILL WEB SPLICE PLATES AND FLANGE SPLICE PLATES, DRILLING THROUGH NEW WT. SECTION AS SHOWN.
  - ALL SHOP FILLET WELDS ARE TO FOLLOW PROCEDURE PW09.

OFFICE COPY  
 OCT 31 1989  
 REVIEWED BY: [Signature]

MATERIAL: A36, UNLESS OTHERWISE NOTED.  
 WELDING: TO MEET AWS D1.1-80.  
 HOLES: 15/16" Ø, UNLESS OTHERWISE NOTED.  
 PAINT: NONE  
 TYPE OF PAINT: N/A  
 CLEANING: SANDBLAST AFTER FABRIC. BEFORE FABRIC.

STATE OF MAINE  
 DEPARTMENT OF TRANSPORTATION  
 Approved [Signature] Returned for Corrections [Signature]  
 10/1/89  
 Approved as noted [Signature] Rejected [Signature]  
 K Jacobs  
 JR. ENGR.

BUCKNAM RD. OVER I-295  
 FALMOUTH, ME / CUMBERLAND COUNTY  
 G.M. CROLEY P.F.W., INC. 09-18-89  
 NOT TO SCALE PEEK'S FAB. & WELDING CHK. BY: [Signature]  
 504.7 BEAM #4 DETAILS  
 M-0736 (2) A8099-2

101-212